

The BioSonics Swivel Mount for Digital Transducers

In response to requests from BioSonics Digital Scientific Echosounder users, BioSonics has developed the Swivel Mount for its line of Digital Transducers.

The Swivel Mount (SWIV) is designed to provide easy attachment of the Digital series transducers (420 kHz through 120 kHz) to meet varying transducer deployment requirements.



Figure 1



Figure 2

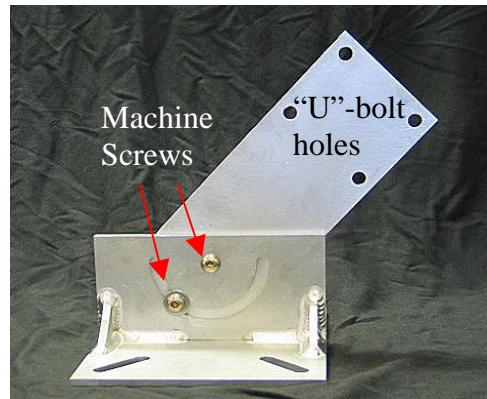


Figure 3

Figure 1 illustrates the mount in a standard “horizontal” aspect. Imagine the transducer attached to the slotted face (right-side of Figs 1 and 2), and a 2.5-inch diameter pole held in place by two “U” bolts, through the four holes in the rectangular plate (upper-left of Figs 1 and 2 and labeled in Fig. 3). An example of a pole mounted to the back of the plate is shown in Figure 4.

The pole can then be attached to the fixed surface, such as the gunnel of a boat or a railing along a pier facing.

Figure 3 could be the position for an angled mount to the sampling platform (e.g. boat or pier facing), maintaining a vertical aiming angle for the transducer. The angle between the transducer plate (slotted face) and the “pole attachment” (4-holes in square pattern) is adjusted by loosening and tightening the two machine screws.

This mount has proven very versatile and robust and can be utilized in either fixed or mobile deployments. It is manufactured from heavy-gauge aluminum and stainless steel components.



Figure 4

The overall effectiveness and reliability of your mount and transducer aiming may be enhanced by the addition of the BioSonics Integrated Orientation Sensor (IOS) – an option available ONLY on the BioSonics Digital Transducer series.