

***Industry perspective on potential costs/economic
benefits of vessel-quieting technologies
(e.g., effects on fuel usage, efficiency)
for large vessels***

Dr. Dietrich Wittekind (DW-ShipConsult)

*Potential Application of Vessel-Quieting Technology on Large Commercial Vessels
Silver Spring, Maryland, 1-2 May, 2007*

With thanks to Dokumente des Meeres GmbH Dieter Paulmann

1

DW-ShipConsult
Dr. Dietrich Wittekind

Summary

There is a high probability of noise interference between shipping and mammals in low frequencies at least in the future

Low frequencies are dominated by propeller noise in connection with cavitation

Fuel consumptions of ships at given speed can be reduced by 10% (short term) and 30% (medium term), but the gain in noise reduction is very low

Technology to investigate and improve ships in model and full scale are available

Silencing of low speed diesel engines by active mounts seems feasible

Short to medium term improvement of low frequency noise by 5 to 20 dB is possible

There is a large gap in knowledge of radiated noise of conventional ships

2

DW-ShipConsult
Dr. Dietrich Wittekind

This presentation has been made possible by

Dokumente-des-Meeres GmbH

www.hsva.de Hamburg Ship Model Basin

www.friendship-systems.com

www.hutchinsonrubber.com

www.nordseewerke.de

Propellers and Cavitation

Numerical optimisation

Active mounts

Containership noise

3

DW-ShipConsult
Dr. Dietrich Wittekind

Contents

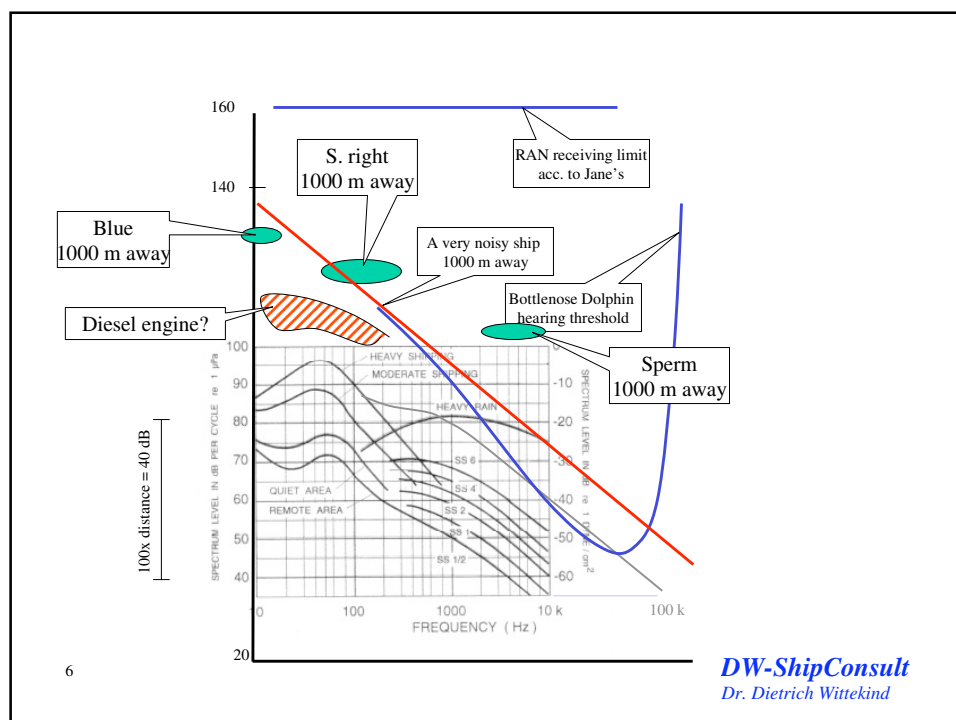
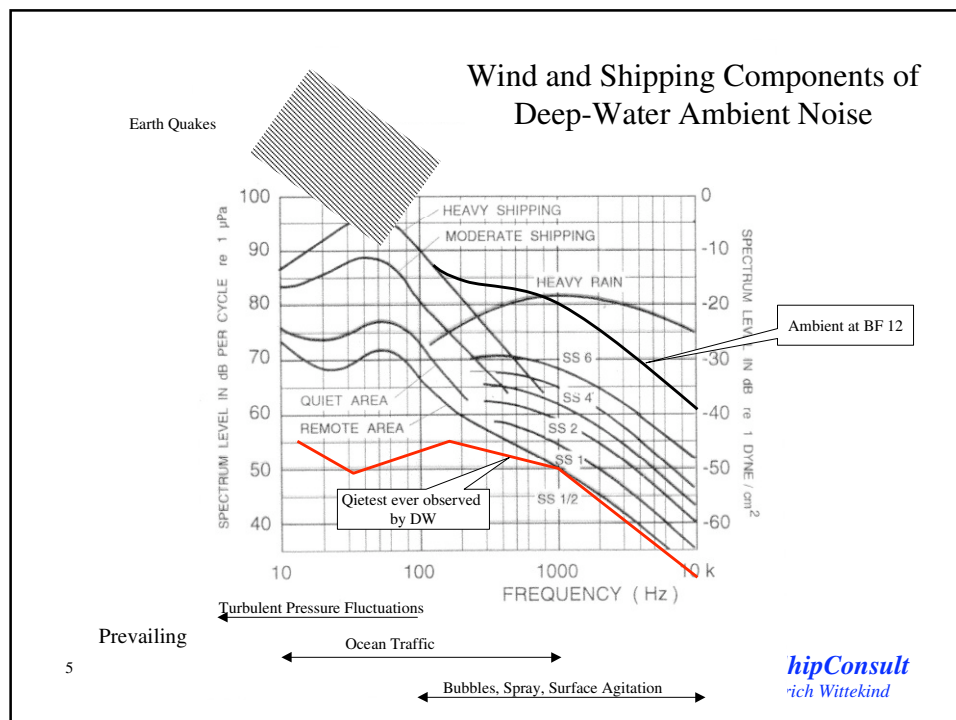
The scene: Where is shipping noise in the natural spectrum?

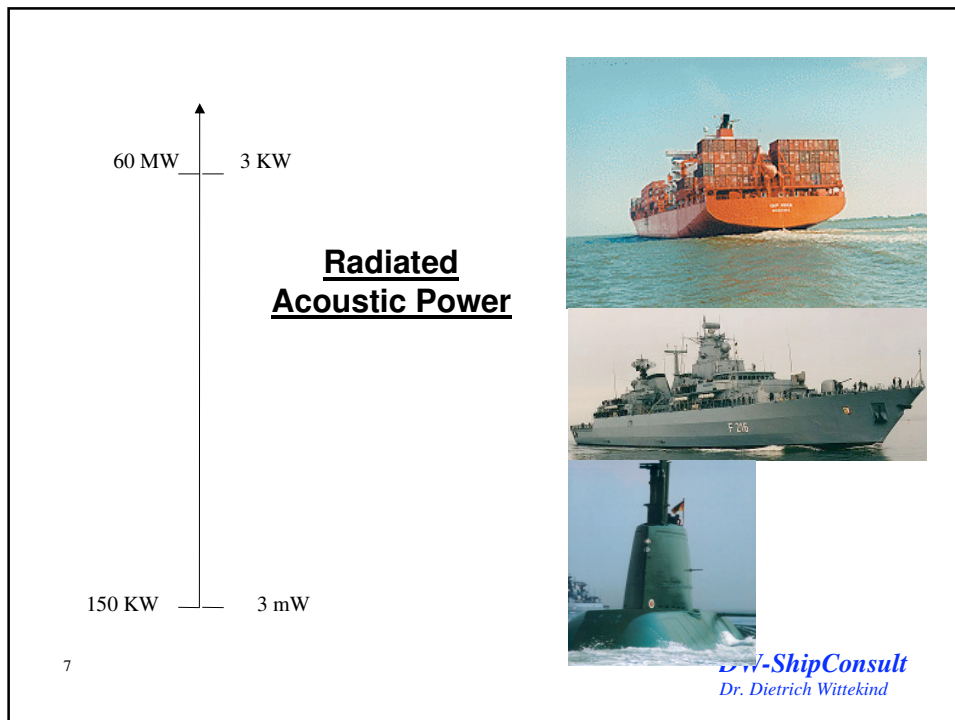
How economical can ships be?

Are there easy ways to silence ships not compromising economy?

4

DW-ShipConsult
Dr. Dietrich Wittekind





Is there a connection between noise and economy?

Not really, but.....

In general: Noise is a matter of

speed.....

rather than power

8

DW-ShipConsult
Dr. Dietrich Wittekind

Some things to think about

Slow steaming is not necessarily economical

Ships get 30 years old → slow technical change

Each new ship has to fit into a global rhythm

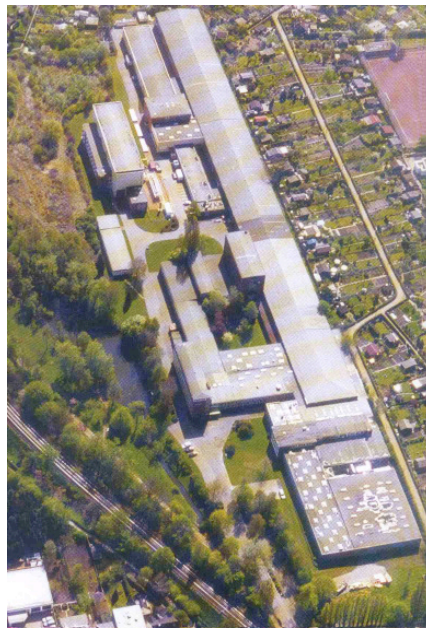
Economy is work sharing, interfaces have to be simple

Nobody ever really thought about noise of cargo vessels

We talk about large vessels - but smaller, bad ones may be worse

9

DW-ShipConsult
Dr. Dietrich Wittekind

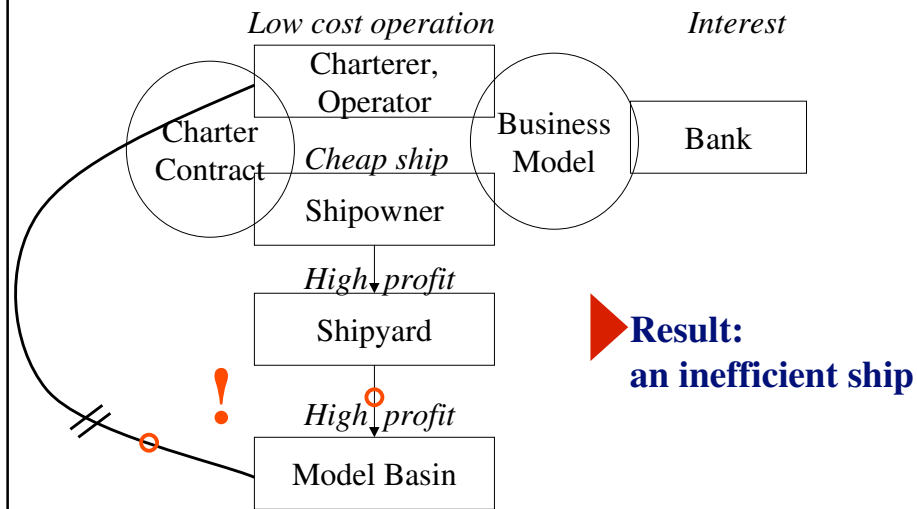


**A Model Basin
(HSVA)**

10

DW-ShipConsult
Dr. Dietrich Wittekind

A new ship: the chain of interests



11

DW-ShipConsult
Dr. Dietrich Wittekind

Interests

Bank	High interest on a safe credit
Ship owner	Cheap ship and a high charter
Charterer	Low operation cost
Shipyard	High price, low building cost

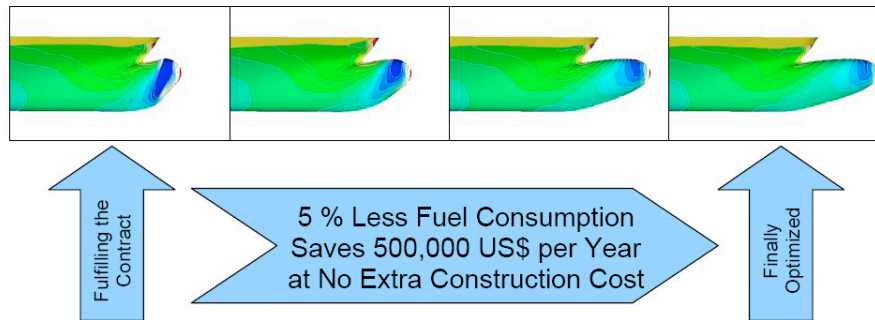
Consequence: Shipyards builds ship which meets requirements, no interest in further improvement. Charterer is interested but is not at the table

12

DW-ShipConsult
Dr. Dietrich Wittekind

5% less power.....

Reductions in fuel consumption of 5 % can often be achieved on ship owner's initiative by optimization beyond the contract requirements. For a 5000 TEU container vessel this means 10 tons less fuel per day or a saving of about 500,000 US\$ per year. This pays back the additional costs for optimization within months!



13

Courtesy of HSVA

DW-ShipConsult
Dr. Dietrich Wittekind

Result of evolutionary optimisation

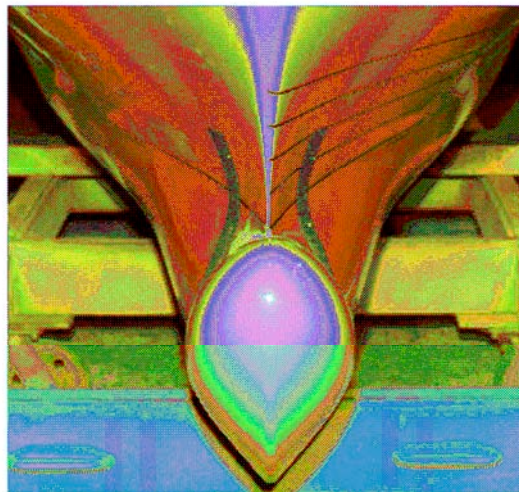


Figure 12: Model of forebody with *InSAC* as tested at HSVA (photo by courtesy of HSVA)

14

DW-ShipConsult
Dr. Dietrich Wittekind

How efficient can you get?

5% less power by further optimisation

5-10% less power by proper numerical optimisation

30% less power by new developments

How much quieter does it get?

~ 2 db

15

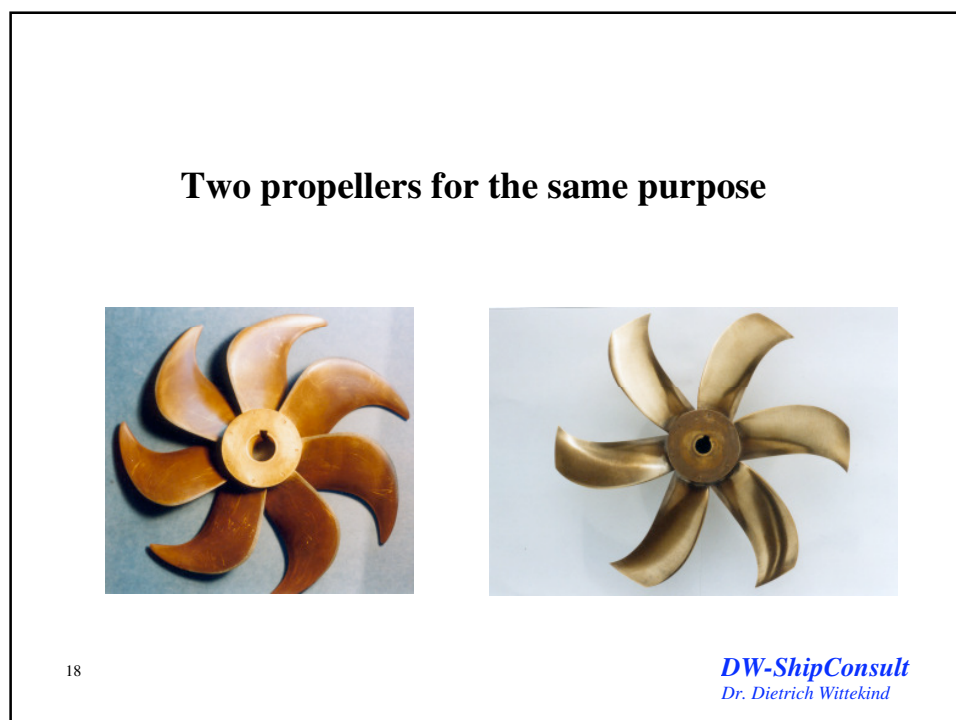
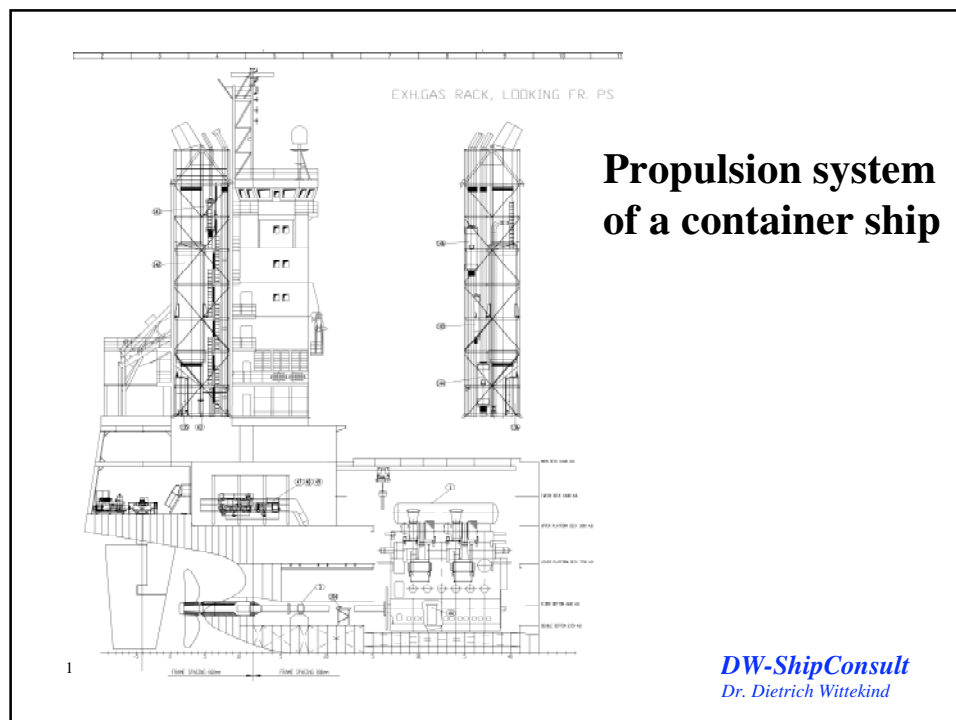
DW-ShipConsult
Dr. Dietrich Wittekind

New question:

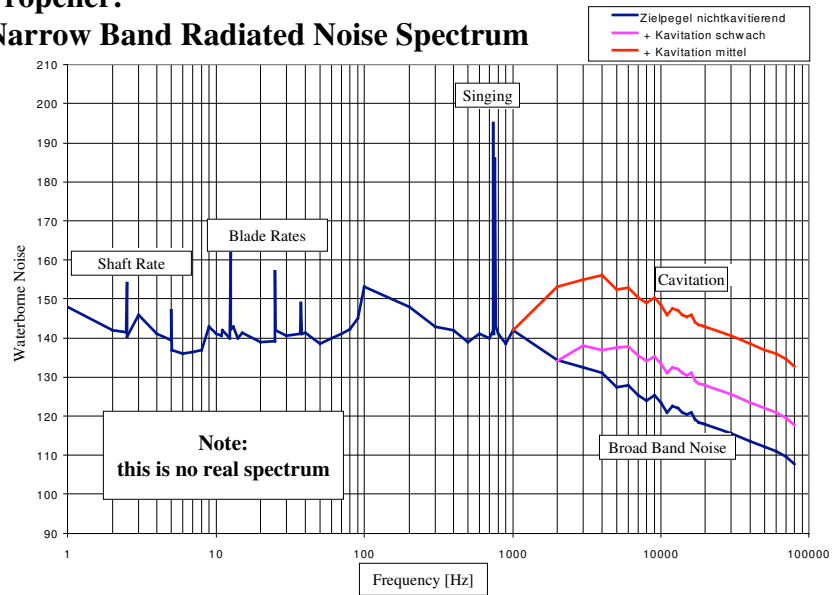
**How can we get substantially quieter
without harming economy too much?**

16

DW-ShipConsult
Dr. Dietrich Wittekind



Propeller: Narrow Band Radiated Noise Spectrum

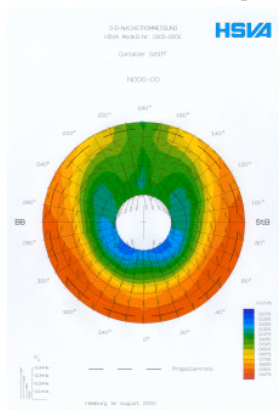


19

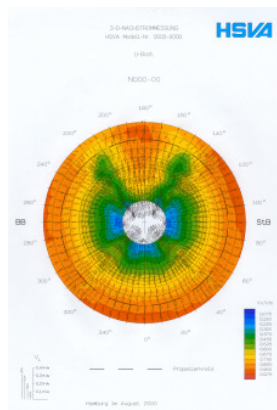
DW-ShipConsult
Dr. Dietrich Wittekind

Wake Fields

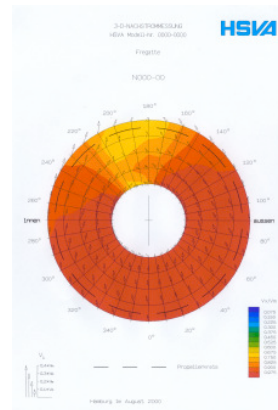
1-S Containership



Submarine



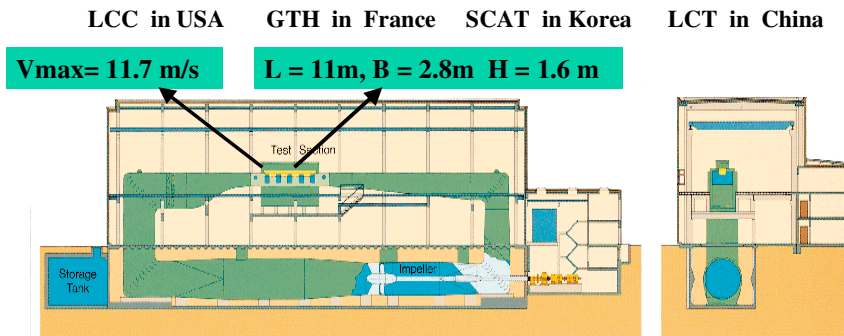
2-S Surface Ship



20

DW-ShipConsult
Dr. Dietrich Wittekind

Modern Cavitation Test Facilities

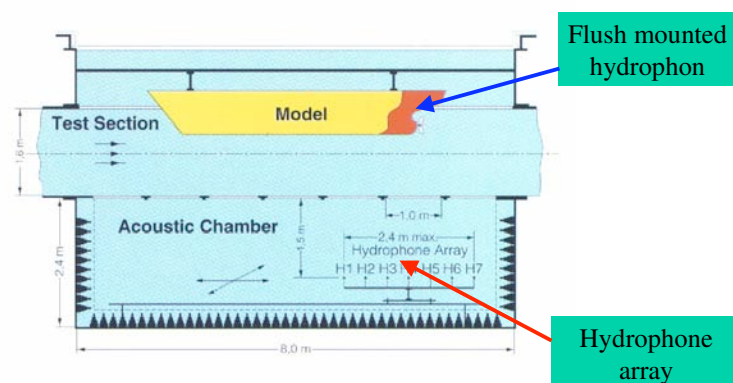


HSVA --> HYKAT

21

DW-ShipConsult
Dr. Dietrich Wittekind

Modern Cavitation Test Facilities

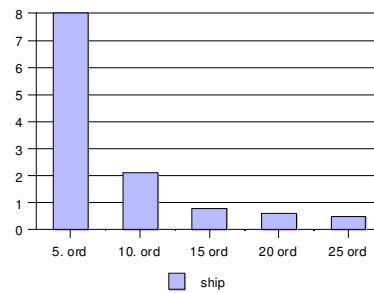


Arrangement for Noise Measurements

22

DW-ShipConsult
Dr. Dietrich Wittekind

Vibrations and Noise 1970 ies



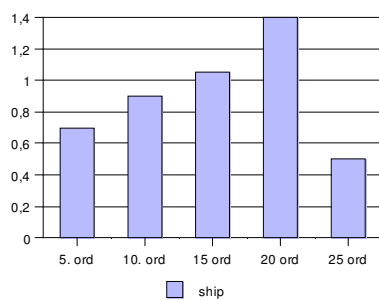
Pressure Fluctuations in kPa

23

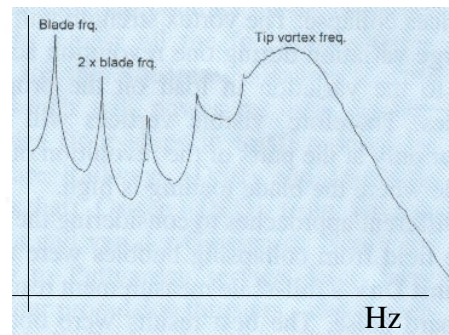
Courtesy of HSVA

DW-ShipConsult
Dr. Dietrich Wittekind

Vibrations and Noise 1990 ies and today



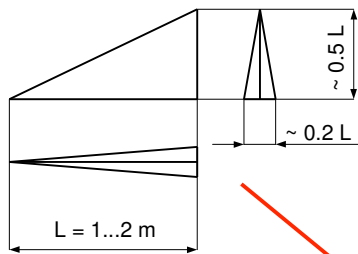
Pressure Fluctuations in kPa



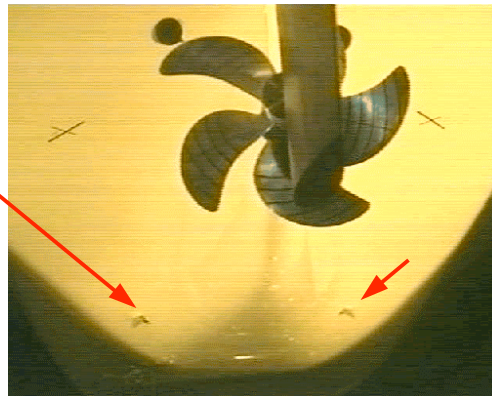
24

Courtesy of HSVA

DW-ShipConsult
Dr. Dietrich Wittekind



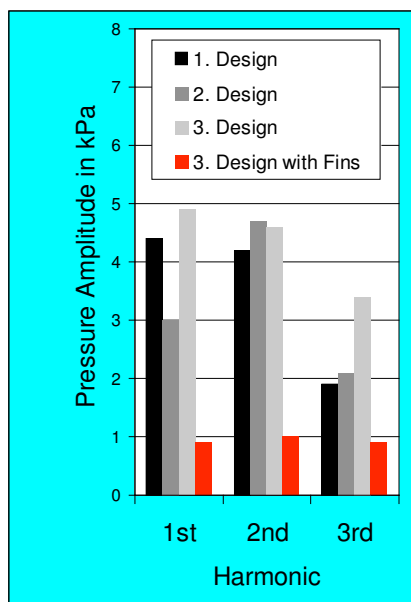
Reduction of Pressure Pulses by Vortex Generator Fins



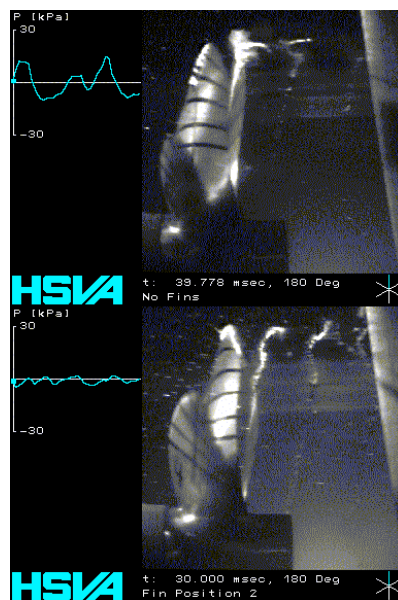
25

Courtesy of HSVA

DW-ShipConsult
Dr. Dietrich Wittekind



26



DW-ShipConsult
Dr. Dietrich Wittekind

Possibilities for Air Injection



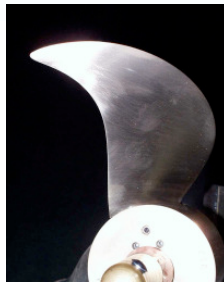
27

Courtesy of HSV A

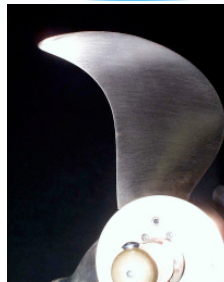
DW-ShipConsult
Dr. Dietrich Wittekind

Blade Tip Variations to reduce cavitation (1)

HSV A



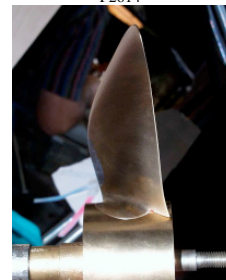
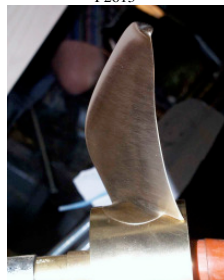
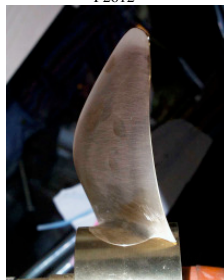
P2612



P2613



P2614



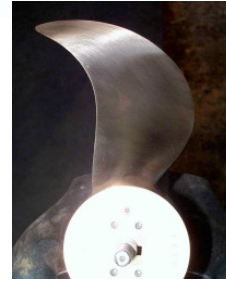
Blade Tip Variations to reduce cavitation (2)



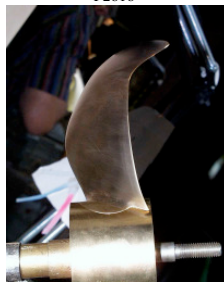
P2615



P2616



P2617



A quiet propeller and the consequences

- | | |
|-----------------------------------|---------------------------------------------------|
| • good wake field | => slender ship, large dimensions |
| • reduces loading at large radius | => low η |
| • large area ratio | => low η , increased mass of propeller |
| • small skew | => higher pressure pulses |
| • large skew | => more sensitive to singing |
| • optimizes blade number | => more blades, low η , larger mass |
| • low circumferential speed | => larger propeller = increased mass, high η |

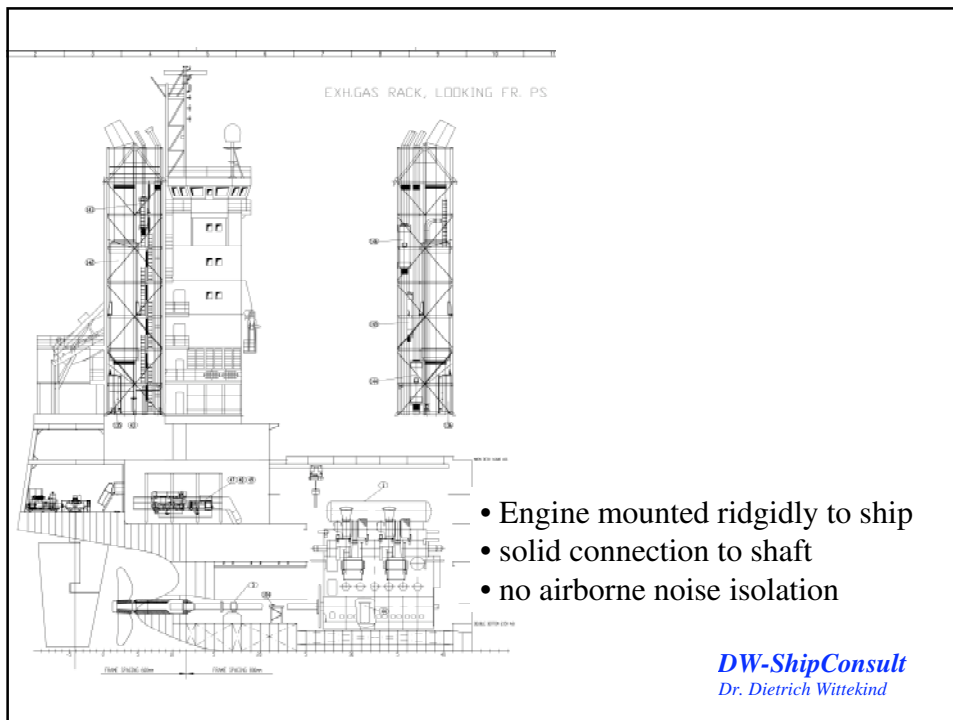
yields ~ 6 dB

best short term measure:


put more effort in wake field optimisation and propeller design

30


DW-ShipConsult
Dr. Dietrich Wittekind




Navy – Active N & V Control



MTU 12V4000 Engine equipped with Paulstra active mounts
« Soft » metallic foundation (MTU test facilities)



Common system investigation with MTU in Diesel engine applications

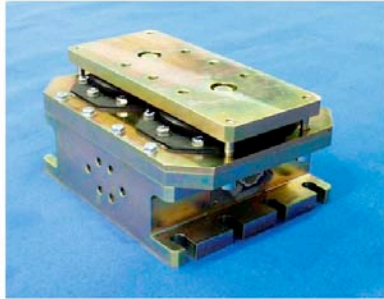


HUTCHINSON PAULSTRA VIBRACHOC STOP CHOC PROPRIETARY

32

DW-ShipConsult
Dr. Dietrich Wittekind

Multiple degrees-of-freedom active mounts



Modular design :

- large range of actuators from 30 to 300 Newtons
- large range of rubber mounts (for civil and navy applications)
- => infinite number of combinations !

Actuator range



Coming soon



HUTCHINSON PAULSTRA VIBRACHOC STOP CHOC PROPRIETARY

33

DW-ShipConsult
Dr. Dietrich Wittekind

Noise reduction of a large low speed diesel engine

Passive measures likely not feasible (large mass of engine)

Active mounts may be a way

- needs development
- need technology to isolate shaft
- look at multipath sound transfer first

34

DW-ShipConsult
Dr. Dietrich Wittekind

A Way Ahead

First: Reduce Cavitation

- improve wake field
- improve propeller
- air injection
- more twin screw

Silence Diesel engines

- resilient foundation (smaller engines)
- active noise cancellation (all engines)

But needs some (yet limited) research



We may get 5-20 dB quite easily

35

DW-ShipConsult
Dr. Dietrich Wittekind